

沙田 302 管理有限公司
S.T. 302 Management Limited

牌照號碼 / Licence Number : C-255873

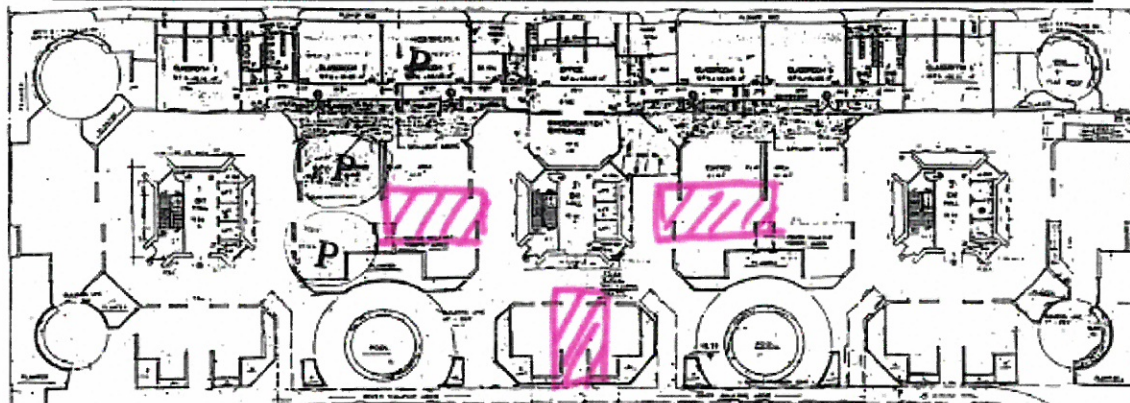
地址: 新界沙田安景街 19 至 21 號地下

電話: 2646-1859 傳真: 2637-6131

本公司檔號: ST302/NTT/008/24/LW

致: 碧濤花園一期各業戶:

第二區平台天花石屎維修(近百利閣)打鑿工程事宜



就屋苑平台天花石屎維修工程，承辦商[貝思工程有限公司]將於 1 月 9 日 (星期二) 至 1 月 24 日 (星期三) 進行第二區平台天花石屎維修(打鑿)工作，並用圍欄圍封施工區域(紅色部份-見附圖)。屆時百利閣平台大堂會繼續開放使用，為確保安全通行，百利閣住戶出入平台大堂時留意指示及切勿走近工程範圍。

施工期間平台將會**發出打鑿聲響及塵埃**，敬請住戶將單位門窗關妥減低聲浪影響及減少塵埃進入。如有任何查詢，請致電 2646 1859 與本處職員聯絡。

敬希垂注，多謝合作！



碧濤花園一期管理處
2024 年 1 月 5 日

沙田 302 管理有限公司
S.T. 302 Management Limited

牌照號碼 / Licence Number : C-255873

地址: 新界沙田安景街 19 至 21 號地下

電話: 2646-1859

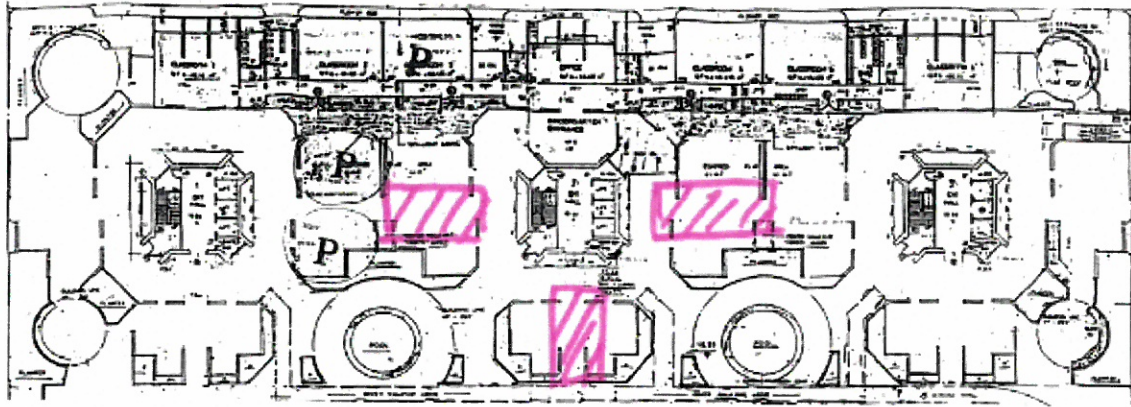
傳真: 2637-6131

Notice No.: ST302/NTT/228/23/LW

Date: 5th January 2024

To : All Residents of Pictorial Garden Phase I

RE: Zone 2 chiseling of Podium Renovation (Near to Bellevue Court)



For the Podium Renovation, the contractor “Spiral Engineering Limited” will carry out Zone 2 chiselling work in the podium from 9/1/2024 (TUE) to 24/1/2024 (WED) and cordoning off Zone 2 by work fence (Please see the attached plan for details). During the works, the podium lobbies of Bellevue Court will continue to be open for use. To ensure safe passage, residents of Bellevue Court should pay attention to the instructions when entering and exiting the podium lobby and do not enter the work area.

During the construction period, the podium will emit **chiseling noises and dust**. Residents are requested to close the doors and windows of the unit to reduce the impact of noise and dust entry.

Should you have queries, please contact us at 2646 1859. Thank you for your kind attention and cooperation.



Management Office of Pictorial Garden Phase I