

沙田 302 管理有限公司

S.T. 302 Management Limited

地址：新界沙田安景街 19 至 21 號地下

電話：2646 1859 傳真：2637 6131

本公司檔號：ST302/NTT/030/19/JW

致：碧濤花園第一期各業戶

通 告

雅碧閣外牆混凝土剝落事宜

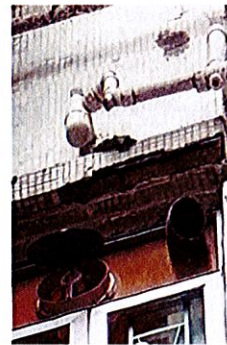
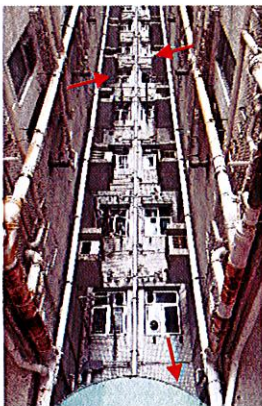
本處職員於早前巡邏雅碧閣平台位置期間(近雅碧閣大堂)，發現有混凝土剝落散落至地上但幸好沒有人受傷，追查後懷疑混凝土是由雅碧閣近 5 樓 G 或 6 樓 F 室廚房外牆剝落引致。本處已即時圍封平台有關位置及安排認可承辦商進行緊急維修工程。

管理處將密切監察上述外牆情況及作出跟進，敬請各業戶盡量遠離有關範圍以免發生意外。

敬希垂注，多謝合作！

碧濤花園第一期管理處

2019 年 2 月 9 日



Date : 9 February, 2019

To : All Residents of Pictorial Garden Phase I

NOTICE

Concrete Spalling at External Wall of Abbey Court

It had come to our finding that some concrete spalling fall down on the floor at podium from either flat F, 6/F or flat G, 5/F external wall of kitchen at Abbey Court but fortunately nobody was injured in this case. For safety, there were not only fenced off portion area of podium under the scope of the aforesaid location, but also the emergency repair would be carried out by registered contractor.

All owners/residents are kindly advised to keep away from the aforesaid location so as to minimize the possibility of accident. Beside, Management Office would closely monitor the external wall condition.

Thank you for your co-operation.



Management Office of Pictorial Garden Phase I