

沙田 302 管理有限公司

S.T. 302 Management Limited

地址：新界沙田安景街 19 至 21 號地下

電話：2646 1859 傳真：2637 6131

本公司檔號: ST302/NTT/216/18/NL

致：碧濤花園第一期各住戶

通 告 有關:窗戶飛墜

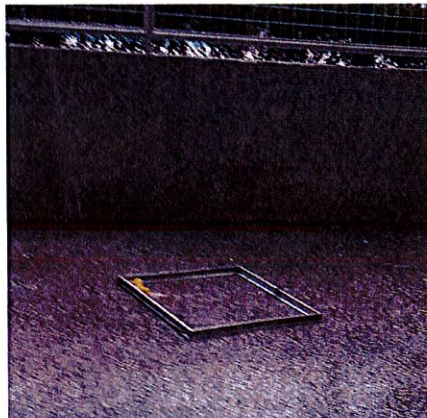
茲通知各業戶，由於超強颱風「山竹」吹襲本港時對本苑窗戶造成嚴重破壞，有多戶玻璃窗飛墜做成險象，本處亦在平台圍封有窗戶飛墜危險之範圍以減少對行人造成傷害，如業戶發覺窗戶有危險請小心開啟窗戶及安排合資格承辦商檢查。

如有查詢，請於辦公時間內致電 2646 1859 與本處職員聯絡。

不便之處，敬請原諒。

碧濤花園第一期管理處

2018 年 9 月 19 日



- Date : 19th September, 2018
- To : All Residents of Pictorial Garden Phase I

Re: Windows Falling

Please be informed that many windows in Pictorial Garden Phase 1 had been caused serious damage and dropped down by the super typhoon “MANGKHUT” when it direct hit to Hong Kong. Dangerous area of windows following in the podium were fenced off to minimize the dangers for passengers as windows following, please careful to open your window and arrange a qualification contractor for windows checking if have any danger in the windows

Should you have any enquiries, please contact our staff at 2646 1859.

Sorry for any inconvenience caused.

通告張貼日期至 2018 年 9 月 28 日
Notice will posted until 28 Sep, 2018

Management Office of Pictorial Garden Phase I